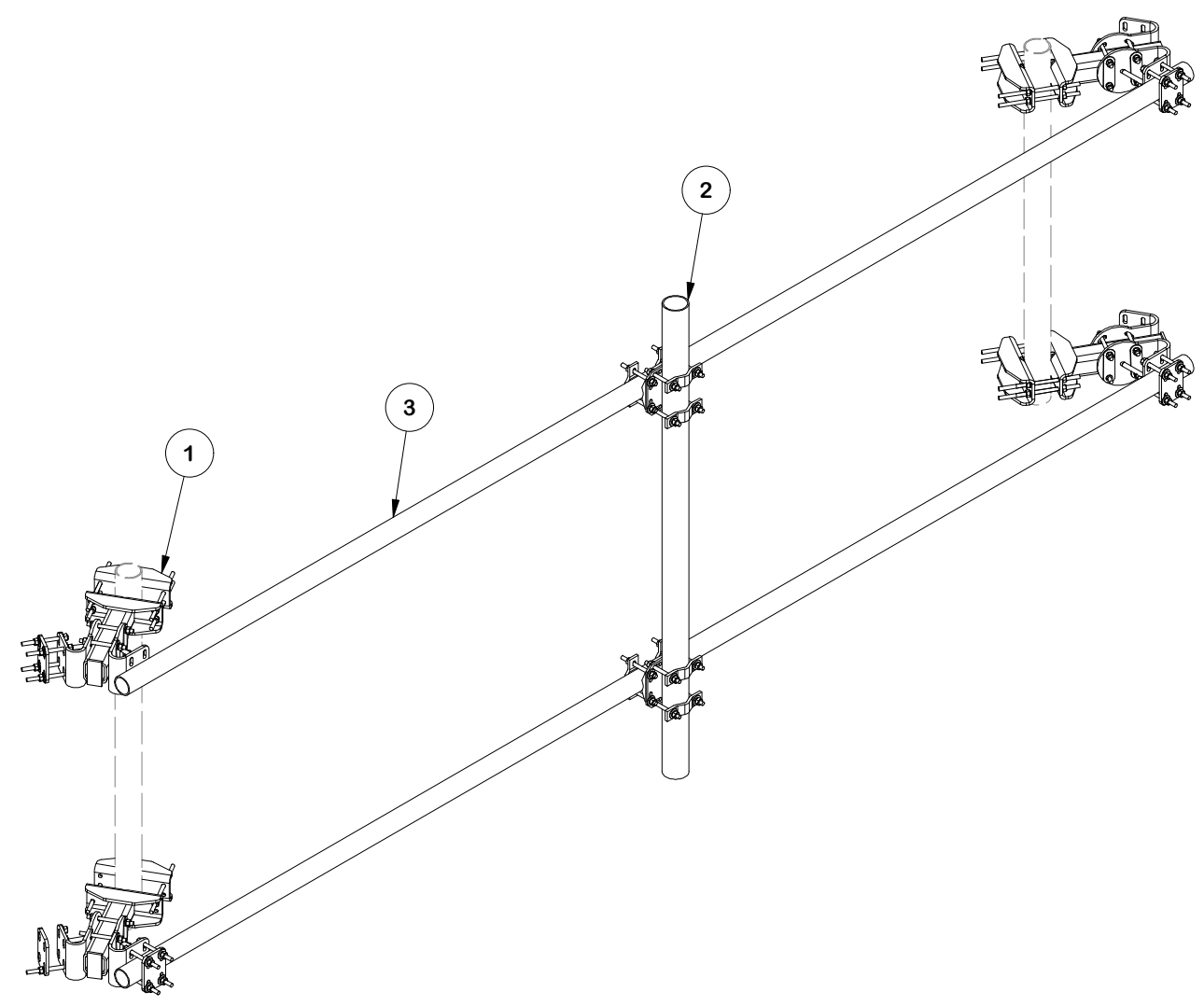
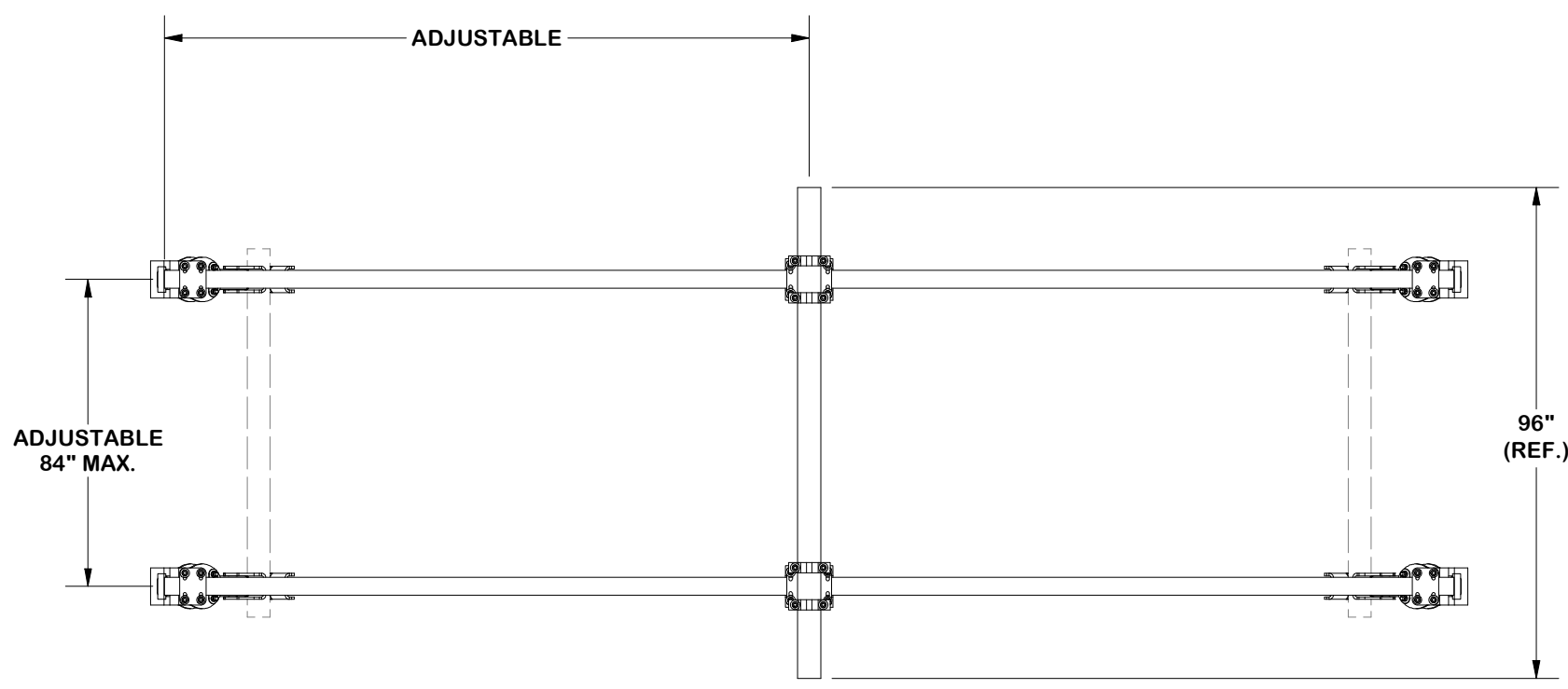
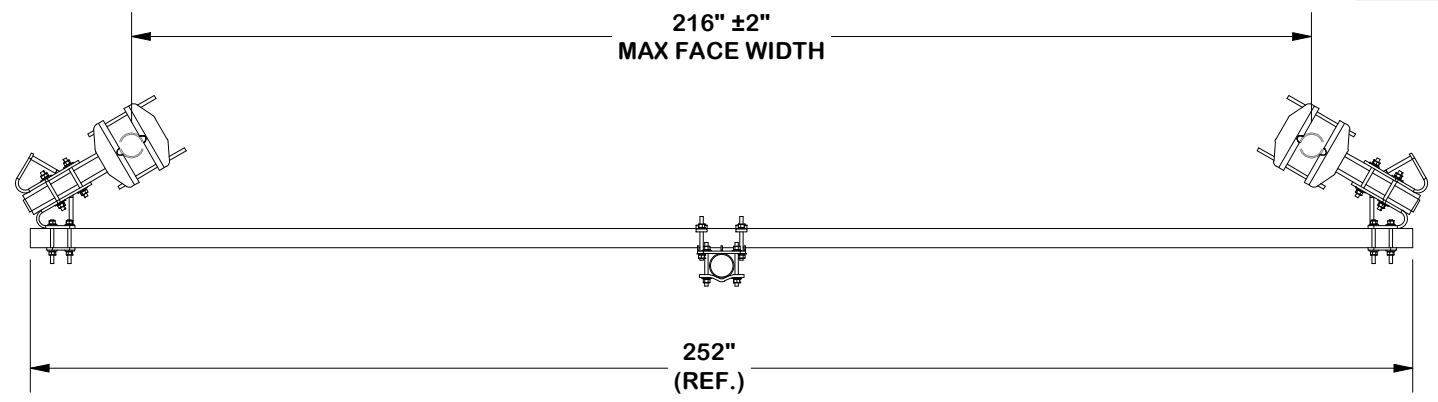


| PARTS LIST | | | | | | |
|------------|-----|--------------|--|----------|--------------------|----------------|
| ITEM | QTY | PART NO. | PART DESCRIPTION | UNIT WT. | LENGTH | NET WT. |
| 1 | 1 | FACE-ASY1-NP | SINGLE SECTOR FACE MOUNT KIT (NO PIPE) | 565.23 | | 565.23 |
| 2 | 1 | FACE-PM496 | FACE ASSEMBLY PIPE MOUNT KIT | 145.77 | | 145.77 |
| 3 | 2 | P3252 | 3" SCH. 40 PIPE (3.5" O.D. X 0.226" - A53 GR. B Fy=35 ksi min) | 169.03 | 252 in | 338.07 |
| | | | | | TOTAL WT. # | 1029.93 |



FINISH:
HOT DIP GALVANIZED.

TOLERANCE NOTES
 TOLERANCES ON DIMENSIONS, UNLESS OTHERWISE NOTED ARE:
 SAWED, SHEARED AND GAS CUT EDGES ($\pm 0.030"$)
 DRILLED AND GAS CUT HOLES ($\pm 0.030"$) - NO CONING OF HOLES
 LASER CUT EDGES AND HOLES ($\pm 0.010"$) - NO CONING OF HOLES
 BENDS AND ANGLES ARE $\pm 1/2$ DEGREE
 ALL OTHER MACHINING ($\pm 0.030"$)
 ALL OTHER ASSEMBLY ($\pm 0.060"$)

PATENT INFORMATION: WWW.SITEPRO1.COM/PATENTS

PROPRIETARY NOTE:
 THE DATA AND TECHNIQUES CONTAINED IN THIS DRAWING ARE PROPRIETARY INFORMATION OF VALMONT INDUSTRIES AND CONSIDERED A TRADE SECRET. ANY USE OR DISCLOSURE WITHOUT THE CONSENT OF VALMONT INDUSTRIES IS STRICTLY PROHIBITED.

DESCRIPTION
**SINGLE-SECTOR MICROWAVE KIT
 W/ 3-1/2" DIA. X 252" HORIZONTALS
 AND PIPE MOUNT**

| | | |
|------------------------------------|---------------------------------|-----------------------------------|
| CPD NO. SP1 | DRAWN BY SDR 3/6/2026 | ENG. APPROVAL 3/11/2026 |
| CLASS 87 | SUB 02 | DRAWING USAGE CUSTOMER |
| CHECKED BY CSL 3/11/2026 | | |

SITE PRO 1
 A valmont COMPANY

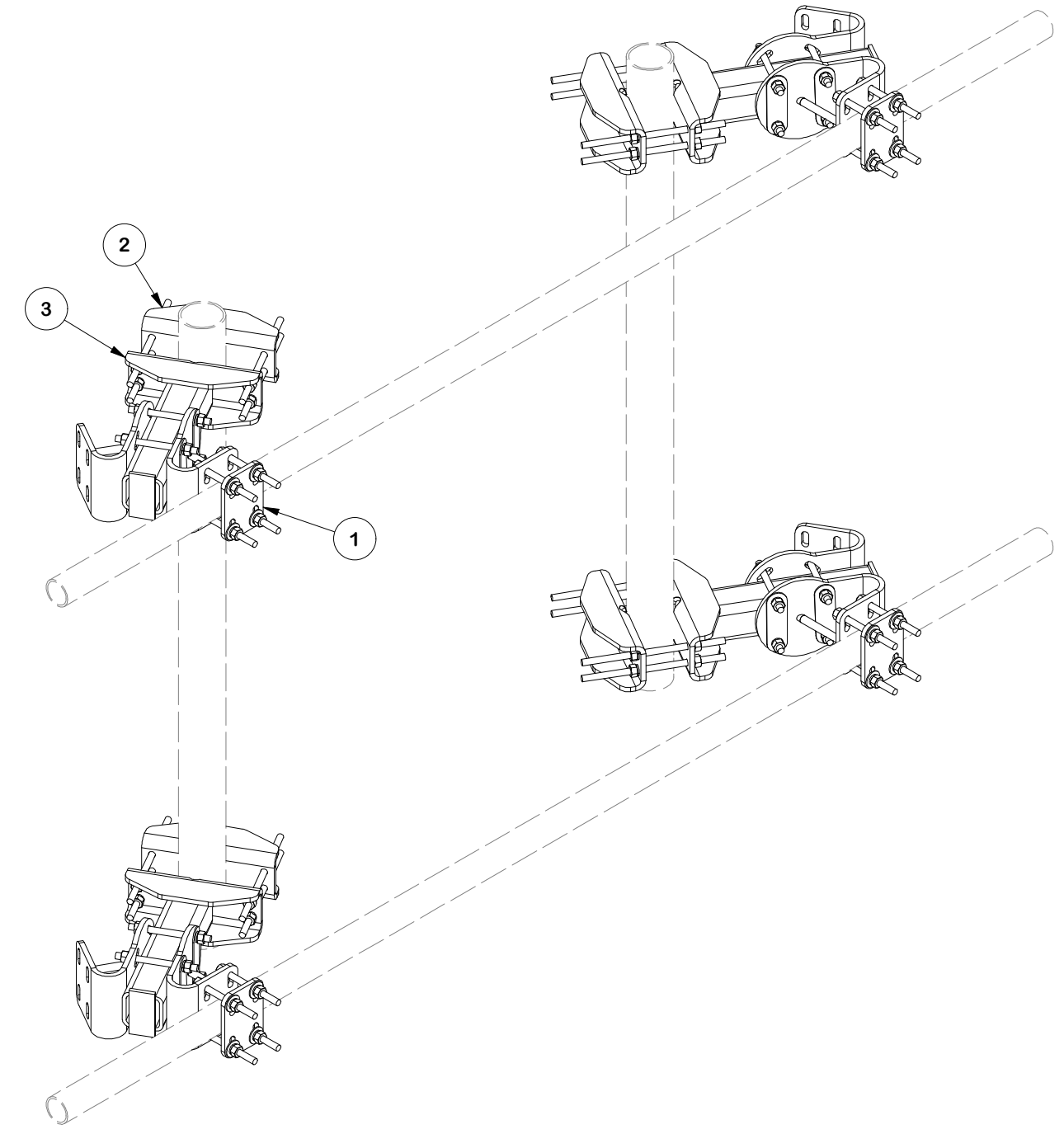
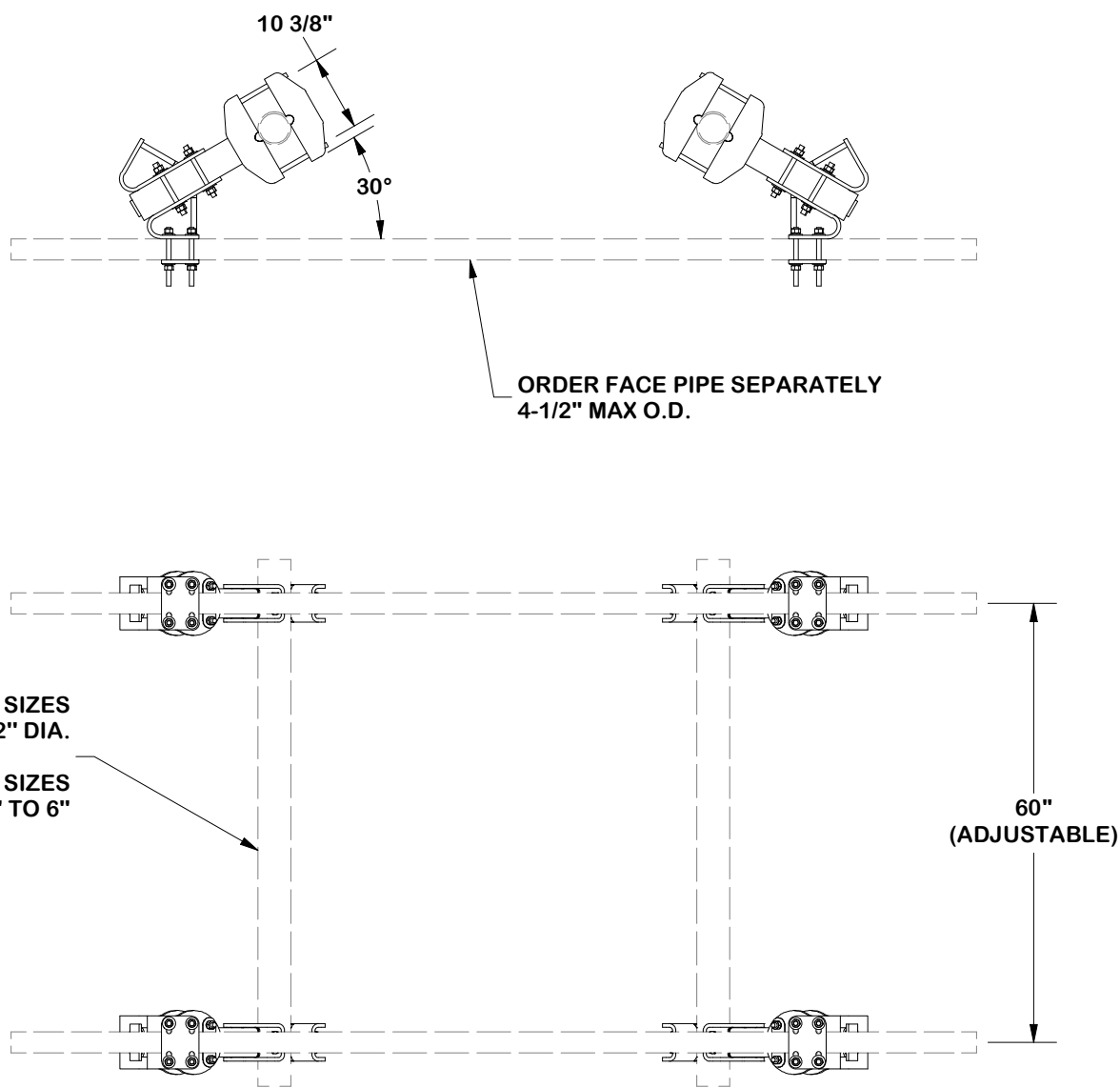
Engineering Support Team:
 sp1engineering@valmont.com

| | |
|----------------------------|-----------------------|
| PART NO. FMW20-3 | PAGE 1 OF 6 |
| DWG. NO. FMW20-3 | |

NOTES:

1. THE MAXIMUM TAPER ADJUSTMENT IS 8° BASED UPON 60" SPACING OF ADJUSTABLE MOUNTING BRACKETS.

| PARTS LIST | | | | | | |
|--------------------|-----|-------------|---------------|--|---------------|---------|
| ITEM | QTY | PART NO. | BOX NO. | PART DESCRIPTION | UNIT WT. | NET WT. |
| 1 | 8 | FACE-CCHALF | P-FACE-CCHALF | FACE ASSEMBLY CORNER CONNECTION (HALF) | 33.15 | 265.20 |
| 2 | 4 | FACE-LC | P-FACE-LC | FACE ASSEMBLY LEG CONNECTION | 26.99 | 107.96 |
| 3 | 4 | X-FACE-TW | | TUBE WELDMENT | 48.02 | 192.07 |
| TOTAL WT. # | | | | | 565.23 | |



FINISH:
HOT DIP GALVANIZED.

TOLERANCE NOTES

TOLERANCES ON DIMENSIONS, UNLESS OTHERWISE NOTED ARE:
 SAWED, SHEARED AND GAS CUT EDGES ($\pm 0.030"$)
 DRILLED AND GAS CUT HOLES ($\pm 0.030"$) - NO CONING OF HOLES
 LASER CUT EDGES AND HOLES ($\pm 0.010"$) - NO CONING OF HOLES
 BENDS AND ANGLES ARE $\pm 1/2$ DEGREE
 ALL OTHER MACHINING ($\pm 0.030"$)
 ALL OTHER ASSEMBLY ($\pm 0.060"$)

PROPRIETARY NOTE:
 THE DATA AND TECHNIQUES CONTAINED IN THIS DRAWING ARE PROPRIETARY INFORMATION OF VALMONT INDUSTRIES AND CONSIDERED A TRADE SECRET. ANY USE OR DISCLOSURE WITHOUT THE CONSENT OF VALMONT INDUSTRIES IS STRICTLY PROHIBITED.

DESCRIPTION
**SINGLE-SECTOR MICROWAVE KIT
 W/ 3-1/2" DIA. X 252" HORIZONTALS
 AND PIPE MOUNT**

SITE PRO 1
 Engineering Support Team:
 sp1engineering@valmont.com
 A valmont COMPANY

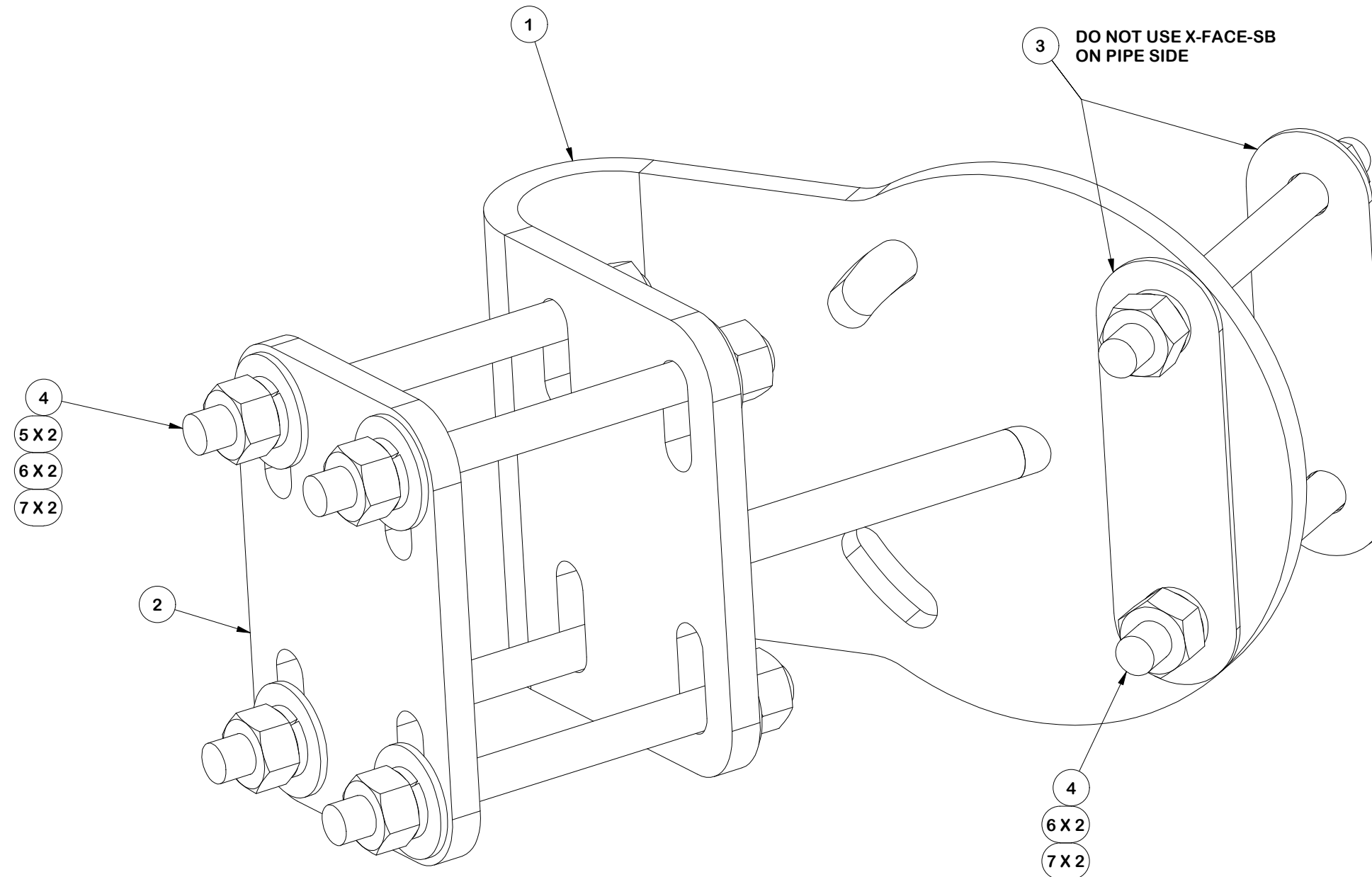
| REV | DESCRIPTION OF REVISIONS | CPD | BY | DATE |
|-------------------------|------------------------------------|-----|-----|------------|
| B | REVISED DRAWING TO SINGLE ASSEMBLY | SP1 | ADB | 11/18/2025 |
| A | ADDED VIEWS FOR CLARITY | SP1 | ADB | 9/16/2025 |
| REVISION HISTORY | | | | |

PATENT INFORMATION: WWW.SITEPRO1.COM/PATENTS

| | | |
|---------|---------------|---------------|
| CPD NO. | DRAWN BY | ENG. APPROVAL |
| SP1 | SDR 3/6/2026 | 3/11/2026 |
| CLASS | DRAWING USAGE | CHECKED BY |
| 87 | CUSTOMER | CSL 3/11/2026 |

| | |
|--------------|----------|
| PART NO. | DWG. NO. |
| FACE-ASY1-NP | FMW20-3 |

| PARTS LIST | | | | | | |
|------------|-----|-----------|-------------------------------|----------|-------------|---------|
| ITEM | QTY | PART NO. | PART DESCRIPTION | LENGTH | UNIT WT. | NET WT. |
| 1 | 1 | X-FACE-TA | TAPER ADJUSTMENT WELDMENT | | 20.84 | 20.84 |
| 2 | 1 | X-FACE-CP | CONNECTION PLATE | 12 in | 4.80 | 4.80 |
| 3 | 2 | X-FACE-SB | SPACER BRACKET (WASHER) | 6 3/4 in | 0.45 | 0.90 |
| 4 | 6 | G58R-8 | 5/8" x 8" THREADED ROD (HDG.) | | 0.70 | 4.18 |
| 5 | 8 | G58FW | 5/8" HDG USS FLATWASHER | 1/8 in | 0.07 | 0.56 |
| 6 | 12 | G58LW | 5/8" HDG LOCKWASHER | | 0.03 | 0.31 |
| 7 | 12 | G58NUT | 5/8" HDG HEAVY 2H HEX NUT | | 0.13 | 1.56 |
| | | | | | TOTAL WT. # | 33.15 |



FINISH:
HOT DIP GALVANIZED.

TOLERANCE NOTES

TOLERANCES ON DIMENSIONS, UNLESS OTHERWISE NOTED ARE:
 SAWED, SHEARED AND GAS CUT EDGES ($\pm 0.030"$)
 DRILLED AND GAS CUT HOLES ($\pm 0.030"$) - NO CONING OF HOLES
 LASER CUT EDGES AND HOLES ($\pm 0.010"$) - NO CONING OF HOLES
 BENDS AND ANGLES ARE $\pm 1/2$ DEGREE
 ALL OTHER MACHINING ($\pm 0.030"$)
 ALL OTHER ASSEMBLY ($\pm 0.060"$)

PATENT INFORMATION: WWW.SITEPRO1.COM/PATENTS

PROPRIETARY NOTE:
 THE DATA AND TECHNIQUES CONTAINED IN THIS DRAWING ARE PROPRIETARY INFORMATION OF VALMONT INDUSTRIES AND CONSIDERED A TRADE SECRET. ANY USE OR DISCLOSURE WITHOUT THE CONSENT OF VALMONT INDUSTRIES IS STRICTLY PROHIBITED.

DESCRIPTION
**SINGLE-SECTOR MICROWAVE KIT
 W/ 3-1/2" DIA. X 252" HORIZONTALS
 AND PIPE MOUNT**

| | | |
|------------------------------------|---------------------------------|-----------------------------------|
| CPD NO. SP1 | DRAWN BY SDR 3/6/2026 | ENG. APPROVAL 3/11/2026 |
| CLASS 87 | SUB 02 | DRAWING USAGE CUSTOMER |
| CHECKED BY CSL 3/11/2026 | | |

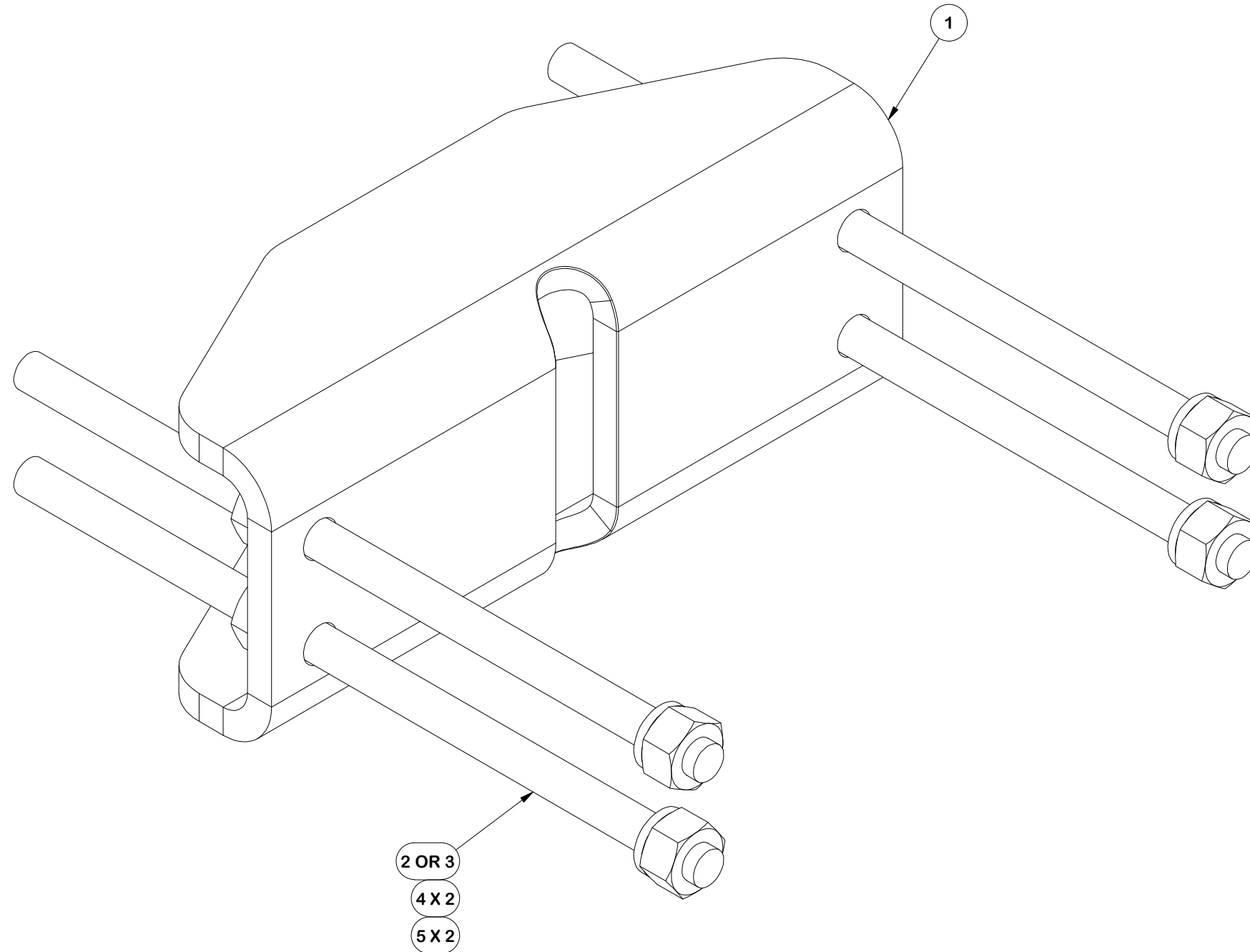


Engineering
 Support Team:
 sp1engineering@valmont.com

A valmont COMPANY

| |
|--------------------------------|
| PART NO. FACE-CCHALF |
| DWG. NO. FMW20-3 |

| PARTS LIST | | | | | | |
|------------|-----|-----------|--------------------------------|--------|-------------|---------|
| ITEM | QTY | PART NO. | PART DESCRIPTION | LENGTH | UNIT WT. | NET WT. |
| 1 | 1 | X-FACE-BP | BENT PLATE FOR X-HDCAMTBW | 13 in | 18.08 | 18.08 |
| 2 | 4 | G58R-14 | 5/8" x 14" THREADED ROD (HDG.) | | 1.22 | 4.88 |
| 3 | 4 | G58R-8 | 5/8" x 8" THREADED ROD (HDG.) | | 0.70 | 2.79 |
| 4 | 8 | G58LW | 5/8" HDG LOCKWASHER | | 0.03 | 0.21 |
| 5 | 8 | G58NUT | 5/8" HDG HEAVY 2H HEX NUT | | 0.13 | 1.04 |
| | | | | | TOTAL WT. # | 26.99 |



FINISH:
HOT DIP GALVANIZED.

TOLERANCE NOTES

TOLERANCES ON DIMENSIONS, UNLESS OTHERWISE NOTED ARE:
 SAWED, SHEARED AND GAS CUT EDGES ($\pm 0.030"$)
 DRILLED AND GAS CUT HOLES ($\pm 0.030"$) - NO CONING OF HOLES
 LASER CUT EDGES AND HOLES ($\pm 0.010"$) - NO CONING OF HOLES
 BENDS AND ANGLES ARE $\pm 1/2$ DEGREE
 ALL OTHER MACHINING ($\pm 0.030"$)
 ALL OTHER ASSEMBLY ($\pm 0.060"$)

PATENT INFORMATION: WWW.SITEPRO1.COM/PATENTS

PROPRIETARY NOTE:
 THE DATA AND TECHNIQUES CONTAINED IN THIS DRAWING ARE PROPRIETARY INFORMATION OF VALMONT INDUSTRIES AND CONSIDERED A TRADE SECRET. ANY USE OR DISCLOSURE WITHOUT THE CONSENT OF VALMONT INDUSTRIES IS STRICTLY PROHIBITED.

DESCRIPTION
**SINGLE-SECTOR MICROWAVE KIT
 W/ 3-1/2" DIA. X 252" HORIZONTALS
 AND PIPE MOUNT**



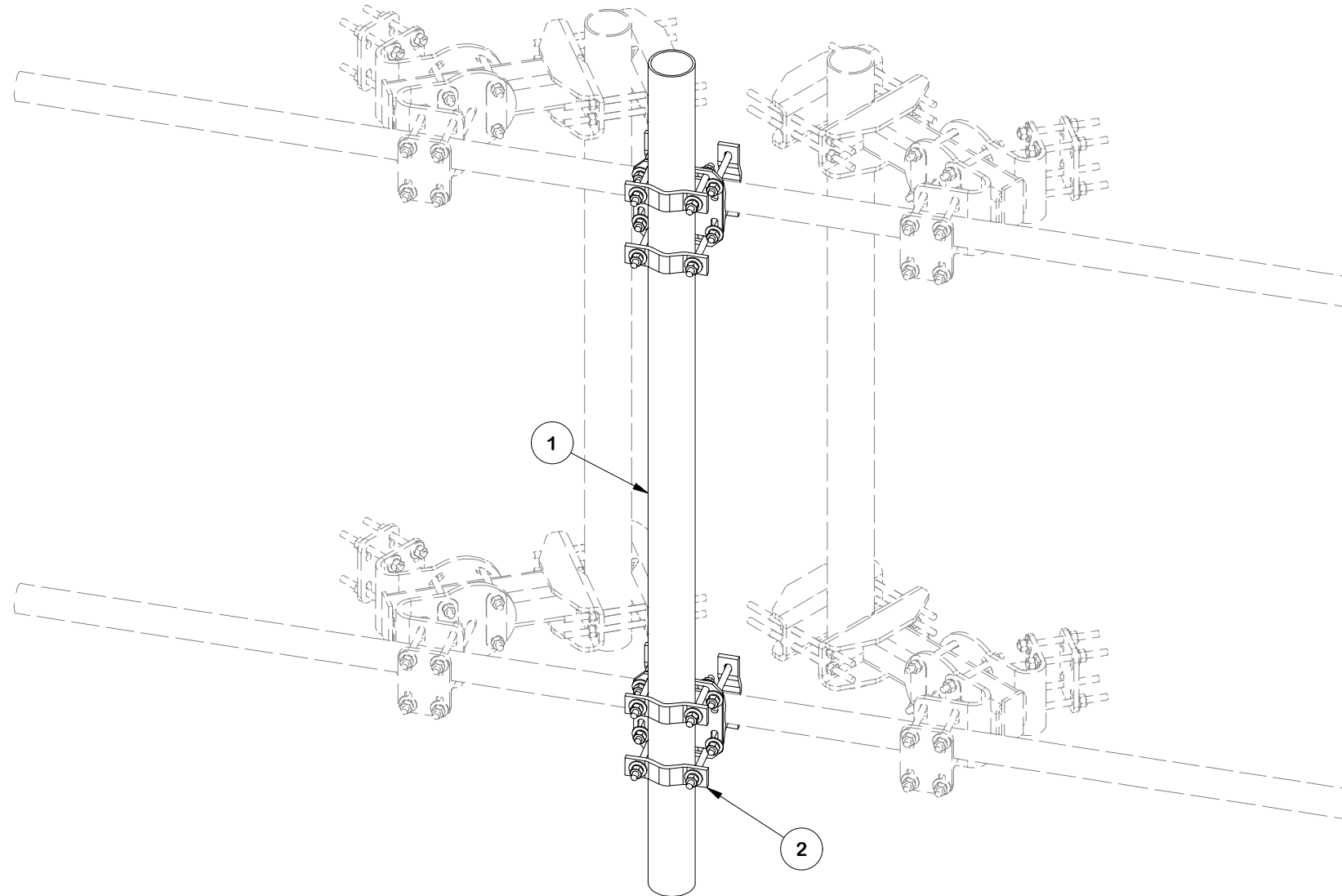
Engineering
 Support Team:
 sp1engineering@valmont.com

A valmont COMPANY

| | | | |
|-----------------------|------------------------|----------------------------------|-----------------------------------|
| CPD NO. SP1 | DRAWN BY SDR | 3/6/2026 | ENG. APPROVAL 3/11/2026 |
| CLASS 87 | SUB 02 | DRAWING USAGE CUSTOMER | CHECKED BY CSL |
| | | 3/11/2026 | |

| | |
|----------------------------|----------------|
| PART NO. FACE-LC | PAGE 4 OF 6 |
| DWG. NO. FMW20-3 | |

| PARTS LIST | | | | | | | | | |
|------------|-----|----------|-----------|--|--------|-------------|---------|--|--|
| ITEM | QTY | PART NO. | BOX NO. | PART DESCRIPTION | LENGTH | UNIT WT. | NET WT. | | |
| 1 | 1 | P496 | | 4" SCH. 40 PIPE (4.5" O.D. X 0.237" - A53 GR. B Fy=35 ksi min) | 96 in | 91.60 | 91.60 | | |
| 2 | 2 | FCX45-U | P-FCX45-U | HEAVY-DUTY UNIVERSAL CROSSOVER KIT | | 27.08 | 54.17 | | |
| | | | | | | TOTAL WT. # | 145.77 | | |



FINISH:
HOT DIP GALVANIZED.

TOLERANCE NOTES

TOLERANCES ON DIMENSIONS, UNLESS OTHERWISE NOTED ARE:
 SAWED, SHEARED AND GAS CUT EDGES ($\pm 0.030"$)
 DRILLED AND GAS CUT HOLES ($\pm 0.030"$) - NO CONING OF HOLES
 LASER CUT EDGES AND HOLES ($\pm 0.010"$) - NO CONING OF HOLES
 BENDS AND ANGLES ARE $\pm 1/2$ DEGREE
 ALL OTHER MACHINING ($\pm 0.030"$)
 ALL OTHER ASSEMBLY ($\pm 0.060"$)

PATENT INFORMATION: WWW.SITEPRO1.COM/PATENTS

PROPRIETARY NOTE:
 THE DATA AND TECHNIQUES CONTAINED IN THIS DRAWING ARE PROPRIETARY INFORMATION OF VALMONT INDUSTRIES AND CONSIDERED A TRADE SECRET. ANY USE OR DISCLOSURE WITHOUT THE CONSENT OF VALMONT INDUSTRIES IS STRICTLY PROHIBITED.

DESCRIPTION
**SINGLE-SECTOR MICROWAVE KIT
 W/ 3-1/2" DIA. X 252" HORIZONTALS
 AND PIPE MOUNT**

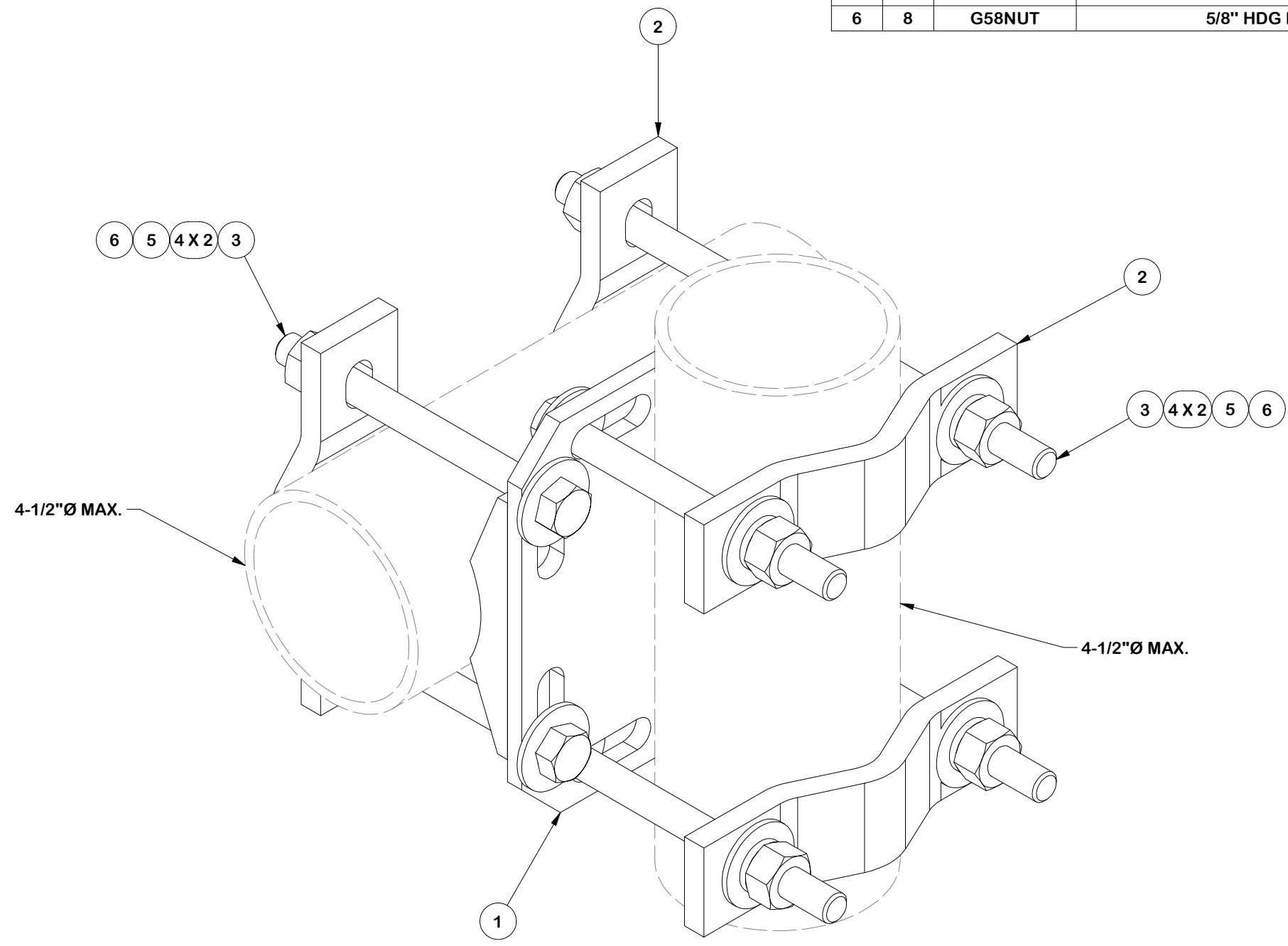
| | | |
|-----------------------|---------------------------------|------------------------------------|
| CPD NO. SP1 | DRAWN BY SDR 3/6/2026 | ENG. APPROVAL 3/11/2026 |
| CLASS 87 | SUB 02 | DRAWING USAGE CUSTOMER |
| | | CHECKED BY CSL 3/11/2026 |



Engineering
 Support Team:
 sp1engineering@valmont.com

| |
|-------------------------------|
| PART NO. FACE-PM496 |
| DWG. NO. FMW20-3 |

| PARTS LIST | | | | | | |
|------------|-----|-----------|--|----------|-------------|---------|
| ITEM | QTY | PART NO. | PART DESCRIPTION | LENGTH | UNIT WT. | NET WT. |
| 1 | 1 | X-SCX4-FR | 4-1/2" FORTRESS CROSSOVER PLATE | | 8.10 | 8.10 |
| 2 | 4 | DCP | 1/2" THICK, 5-3/4" CNTR TO CENTER CLAMP HALF | 8 1/8 in | 2.36 | 9.45 |
| 3 | 8 | G5807 | 5/8" x 7" HDG HEX BOLT GR5 FULL THREAD | 7 in | 0.70 | 5.64 |
| 4 | 16 | G58FW | 5/8" HDG USS FLATWASHER | 1/8 in | 0.07 | 1.13 |
| 5 | 8 | G58LW | 5/8" HDG LOCKWASHER | | 0.03 | 0.21 |
| 6 | 8 | G58NUT | 5/8" HDG HEAVY 2H HEX NUT | | 0.13 | 1.04 |
| | | | | | TOTAL WT. # | 25.62 |



FINISH:
HOT DIP GALVANIZED.

TOLERANCE NOTES

TOLERANCES ON DIMENSIONS, UNLESS OTHERWISE NOTED ARE:
 SAWED, SHEARED AND GAS CUT EDGES ($\pm 0.030"$)
 DRILLED AND GAS CUT HOLES ($\pm 0.030"$) - NO CONING OF HOLES
 LASER CUT EDGES AND HOLES ($\pm 0.010"$) - NO CONING OF HOLES
 BENDS AND ANGLES ARE $\pm 1/2$ DEGREE
 ALL OTHER MACHINING ($\pm 0.030"$)
 ALL OTHER ASSEMBLY ($\pm 0.060"$)

PATENT INFORMATION: WWW.SITEPRO1.COM/PATENTS

PROPRIETARY NOTE:
 THE DATA AND TECHNIQUES CONTAINED IN THIS DRAWING ARE PROPRIETARY INFORMATION OF VALMONT INDUSTRIES AND CONSIDERED A TRADE SECRET. ANY USE OR DISCLOSURE WITHOUT THE CONSENT OF VALMONT INDUSTRIES IS STRICTLY PROHIBITED.

DESCRIPTION
**SINGLE-SECTOR MICROWAVE KIT
 W/ 3-1/2" DIA. X 252" HORIZONTALS
 AND PIPE MOUNT**

| | | |
|------------------------------------|---------------------------------|-----------------------------------|
| CPD NO. SP1 | DRAWN BY SDR 3/6/2026 | ENG. APPROVAL 3/11/2026 |
| CLASS 87 | SUB 02 | DRAWING USAGE CUSTOMER |
| CHECKED BY CSL 3/11/2026 | | |

SITE PRO 1
 A valmont COMPANY

Engineering Support Team:
 sp1engineering@valmont.com

| | |
|----------------------------|----------------|
| PART NO. FCX45-U | PAGE 6 OF 6 |
| DWG. NO. FMW20-3 | |